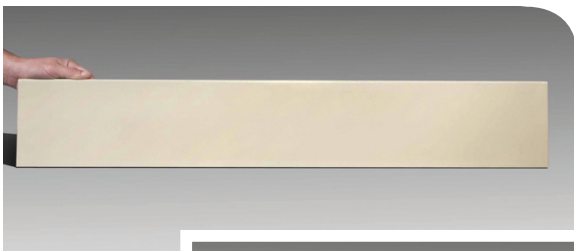


Claymonde

Ceramic Sheets of Color



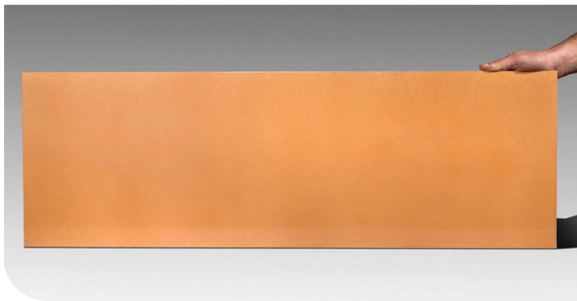
kitchen backsplash



5 3/4" x 35 1/4"

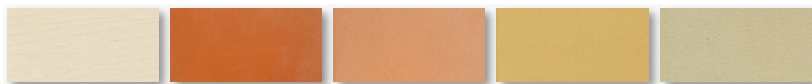
Available
in Two
Standard
Sizes

Ultra-Thin
Lightweight
Modular

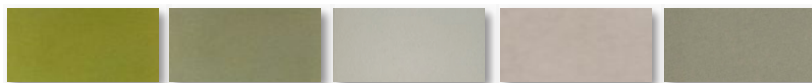


11 1/16" x 35 1/4"

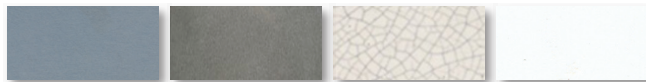
Claymonde Colors



Linen Terra Cotta Sedona Golden Flan Light Celadon



Kiwi Olive Fennel Warm Wool London Fog



Nordic Sky Charcoal Cameo Crackle Arctic White

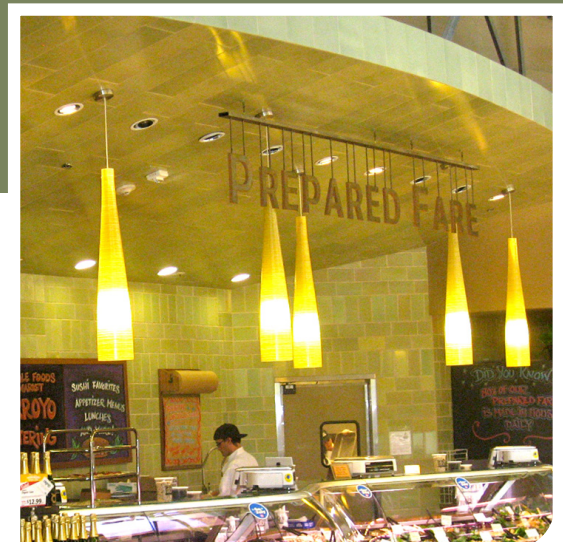
Custom colors
and sizes available
up to 3' x 6'. Call
for details.

Claymonde is Fireclay Tile's modern large format lightweight straight-edge wall tile. The clay body is ultra-thin, 1/4", yet strong and flexible, formed by a proprietary rolling method that makes the tiles close to perfectly flat. Claymonde is available in 14 vibrant colors in two standard long rectangular sizes.

Use Claymonde for residential, retail, hospitality, restaurants and commercial applications.

Kitchen walls and backsplashes, bathroom and shower walls, ceilings, fireplace surrounds, outdoor spaces and exterior walls, decorative murals

Designed and Glazed in California



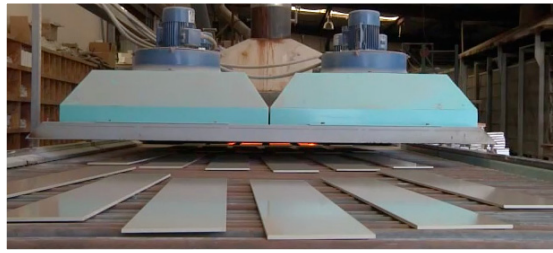
claymonde ceiling, whole foods market in south pasadena, california

Clay: *n.* for ceramic clay body
monde: *n.* French for world, to describe the large form factor

Fireclay Claymonde Specifications



kitchen backsplash



northern california manufacturing process

Installation Guidelines

Silicone Installation: Best for tub surrounds, bathroom walls, backsplashes and fireplace surrounds. Create a waterproof installation by using silicone as the adhesive and grout and have much less mess than mixing thin sets and grouts.

Install Fiberock Aqua-Tough™ 5/8" board plumb and level to wall studs. Take extra time to shim the wallboard and make sure that walls are straight true and level, because the tile will be glued directly to the wallboard. This board is water resistant and approved for tub surrounds.

The back of tiles and wallboard must be free of dust and dry. Apply silicone in a squiggly line pattern from top to bottom of piece. Leave 1" gap between lines and from top, bottom and sides. Press tile smooth and flat to wall. Use 3/32" grout spacers in between tiles. After all pieces are installed use masking tape around joints, caulk joints with silicone smooth and remove masking tape. Unsanded grout may also be used but will not be waterproof and will have to be sealed after installation when it is thoroughly dry. Use only an unsanded grout that is lighter than or blends with the color of the tile.

Mortar Installation: Best for steam shower walls, fountains, pools and heavy use bathroom showers. Apply anti-fracture waterproof membrane (Laticrete 9235, C-cure 963 or equivalent) to mortar bed. Follow instructions of manufacturer for membrane application and thin set application. Use an elastomeric thin set (mapei keralastic) with 100% acrylic additive. Spread thin set evenly and push tiles smooth and flat to each other. Space tiles with 3/32" spacers. Grout with unsanded grout. Use a grout color that blends with the tile or has no color added. Do not use a darker grout than the tile. A darker grout may stain the tile. Seal grout after installation when it is thoroughly dry.

Cutting Claymonde: Use diamond blade wet saw for cutting. Dry tiles after cutting before applying silicone.

Drilling into Claymonde: Use diamond bit

Claymonde's color palette and aesthetic was designed by Fireclay Tile. Each ceramic sheet is glazed by hand in our Northern California factory.

Thickness, Size and Grout Lines

Thickness: 1/4"

Standard Sizes: 5 3/4" x 35 1/4", 11 1/16" x 35 1/4"

Custom Sizes: Custom colors and sizes available up to 3' x 6'. Call for details.

Grout Lines: Between 1/16" and 3/16"

Sheets are modular and can be used in varying sizes. Sheets weigh 2.25 lbs per square foot.

Glaze Colors, Variation and Lead Time

Gloss: All current Claymonde colors come in a gloss finish, creating a shiny, semi-reflective sheen.

Variation: Some color variation exists, though we limit the amount of variation to retain a contemporary look.

Standard Sizes & Colors: Lead time is 4 weeks

Custom Sizes & Colors: Minimum of 8 weeks

Shipping: Shipped via common carrier.

Crate fees may apply.

Glaze Panel Test Results

Smith-Emery Laboratories, Los Angeles, CA 92003

Static Coefficient of Friction	
Dry (ASTM C 1098-96)	0.92-0.93
Wet (not rec. for wet floors)	0.42-0.43
Modulus of Rapture (ASTM C674)	7.466 psi avg
Bond of Strength (ASTM C482)	70 psi avg
Breaking Strength (ASTM C648)	78 lbs
Scratch Resistance (Mohs Scale)	6.5
Chemical Resistance (ASTM C50)	Unaffected
Impact Test	19 lbs
Thermal Shock Resistance (ASTM C484)	Passed
ANSI 137.1 (Crazing Test ASTM C424)	Passed

Maintaining Claymonde

Cleaning your Claymonde: Use non-abrasive cleaners that are recommended for glass or tile. Follow rinsing instructions carefully.

Sealing your Claymonde: Seal annually with a thin coat of penetrating sealer in wet areas and behind cook top areas. Wipe penetrating sealer on with a soft cloth and remove residue before it dries. Sealing will protect tile and make clean up easy.

Perfect for bathroom and shower walls, kitchen backsplashes, and fireplace surrounds or any other wall applications. When installed and grouted with silicone, Claymonde provides a mold-free hygienic surface.

image below: sunset house custom shapes and colors

